

FESTIVAL DELLA SCIENZA MEDICA INTELLIGENZA DELLA SALUTE

DAL 9 AL 12 MAGGIO 2019 - BOLOGNA



**Le molecole circolanti
sono alla base delle
recidive tumorali?**

Gloria Ravagnini

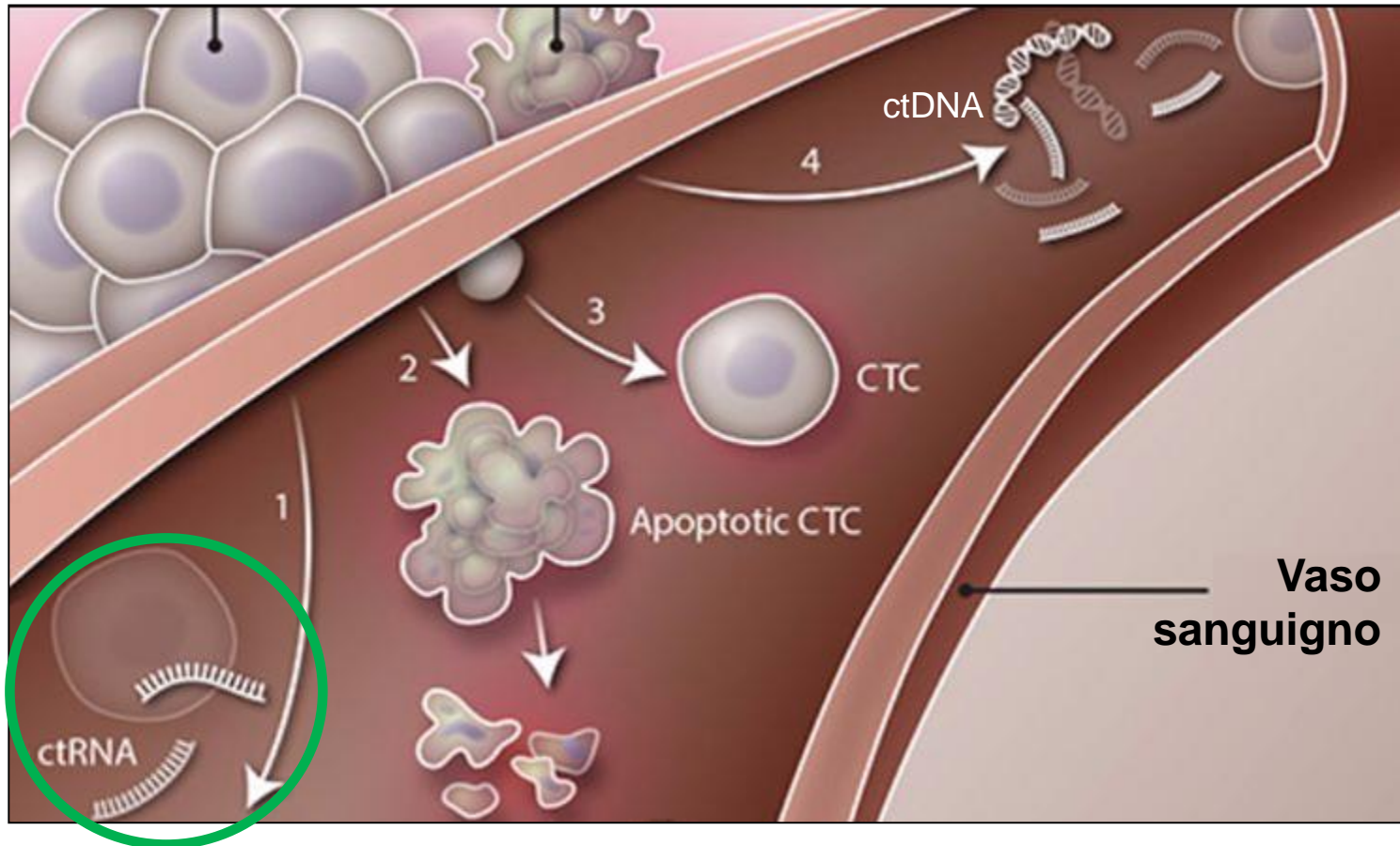
Laboratorio di Farmacogenetica e
Farmacogenomica,
Dipartimento di Farmacia e Biotecnologie,
Università di Bologna

For Women
in Science

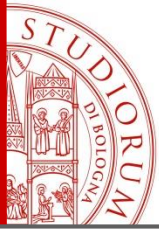


FONDATION
L'ORÉAL

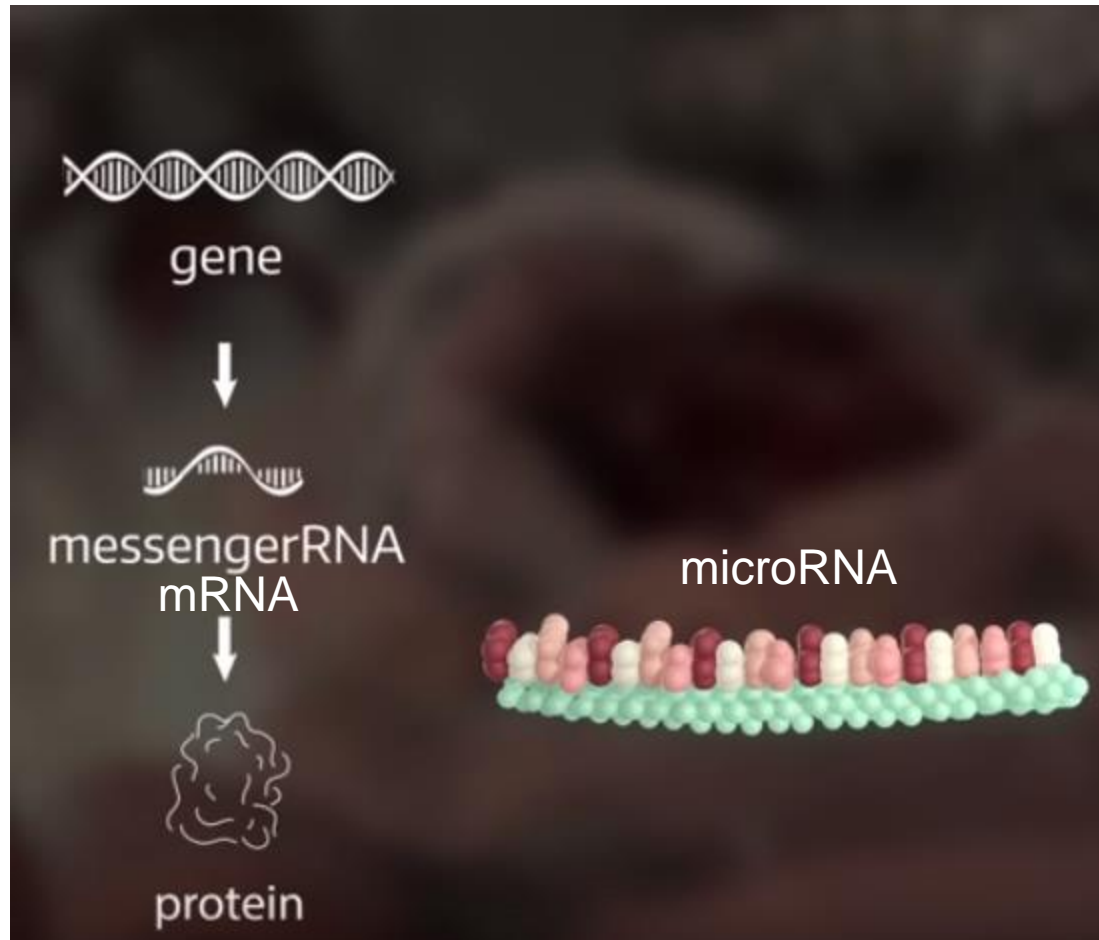
Tumore



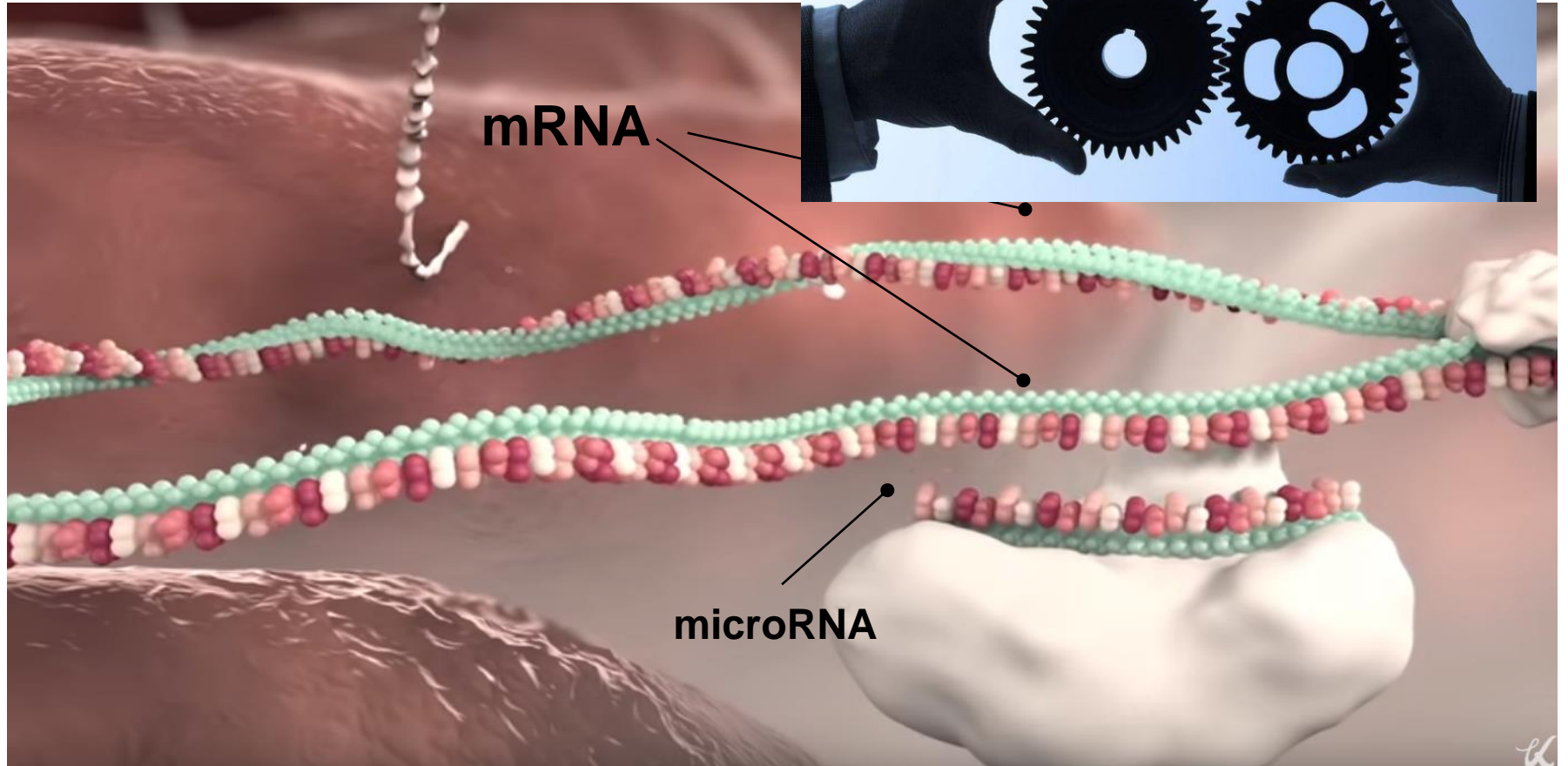
microRNA

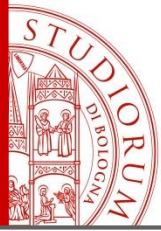


I microRNA



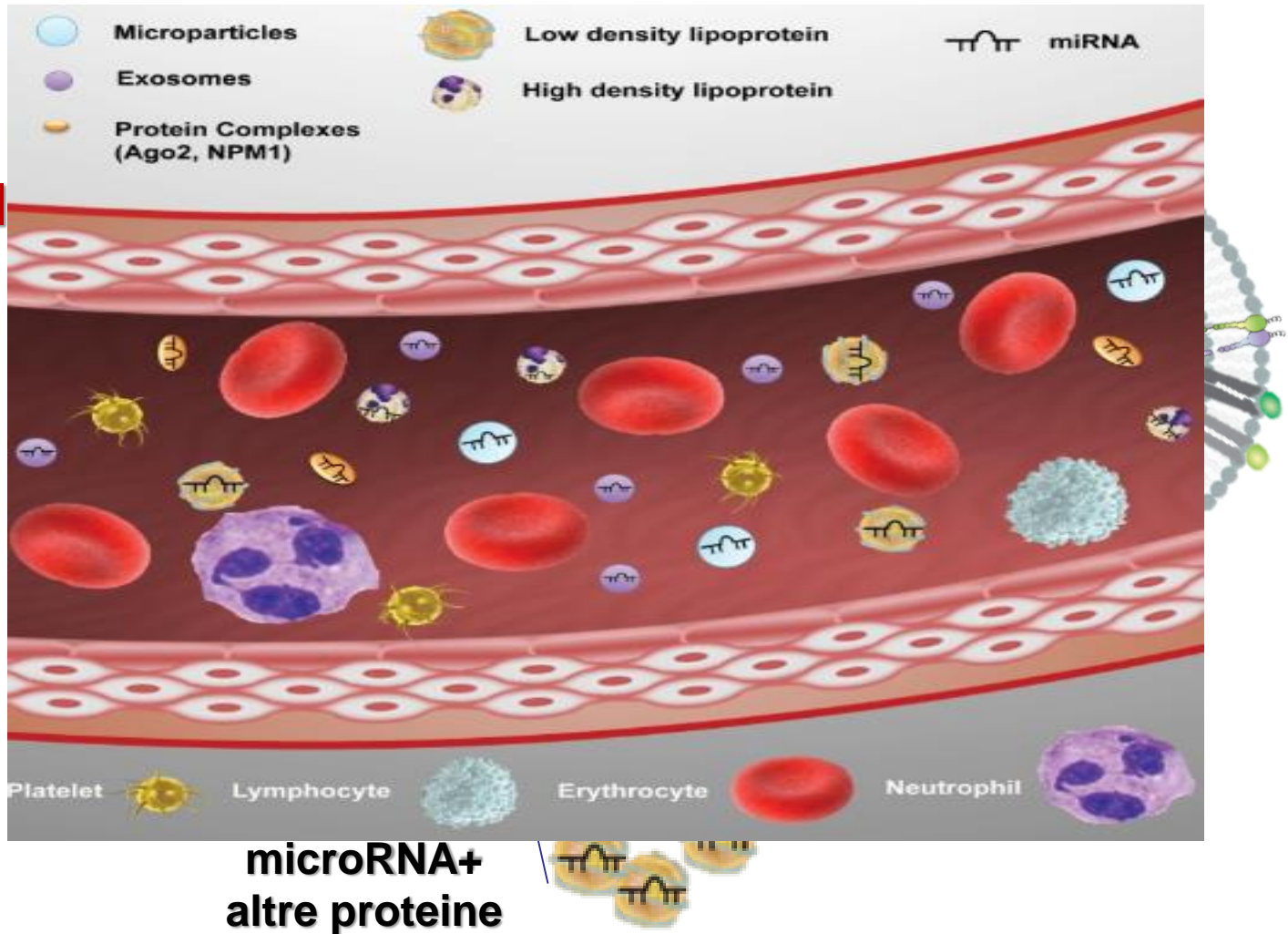
microRNA: Meccanismo di azione

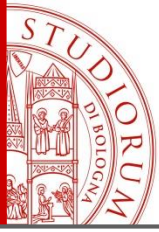




microRNA nel sangue

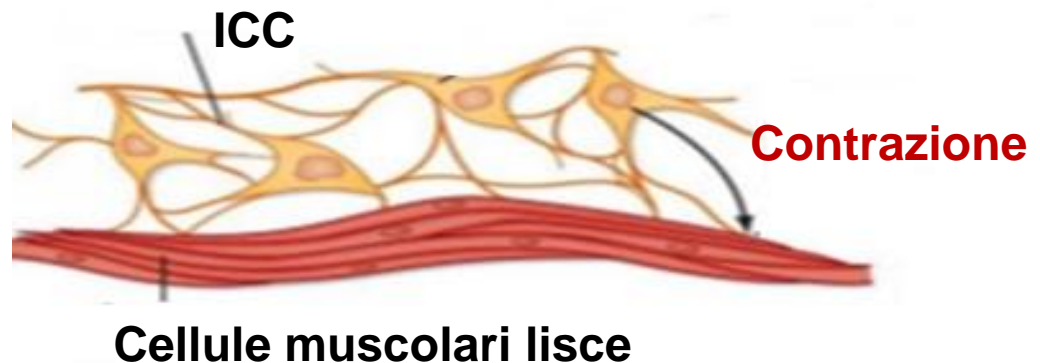
Cell

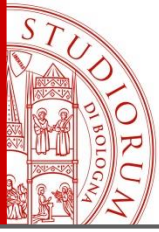




Tumori Stromali GastroIntestinali (GIST)

- Neoplasie rare (700-900 nuovi casi/anno)
- Tratto GI, dall'esofago fino al retto.
- da cellule staminali progenitrici delle cellule interstiziali di Cajal "pacemaker del tratto gastrointestinale"





Tumori Stromali GastroIntestinali (GIST)

85-90% GIST → mutazioni su KIT/PDGFR

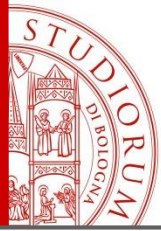


Cellula precursore GIST
normale

KIT/PDGFR
mut



Attivazione di KIT o PDGFR
favorisce la crescita del GIST

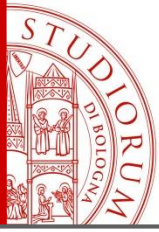


Tumori Stromali GastroIntestinali (GIST)

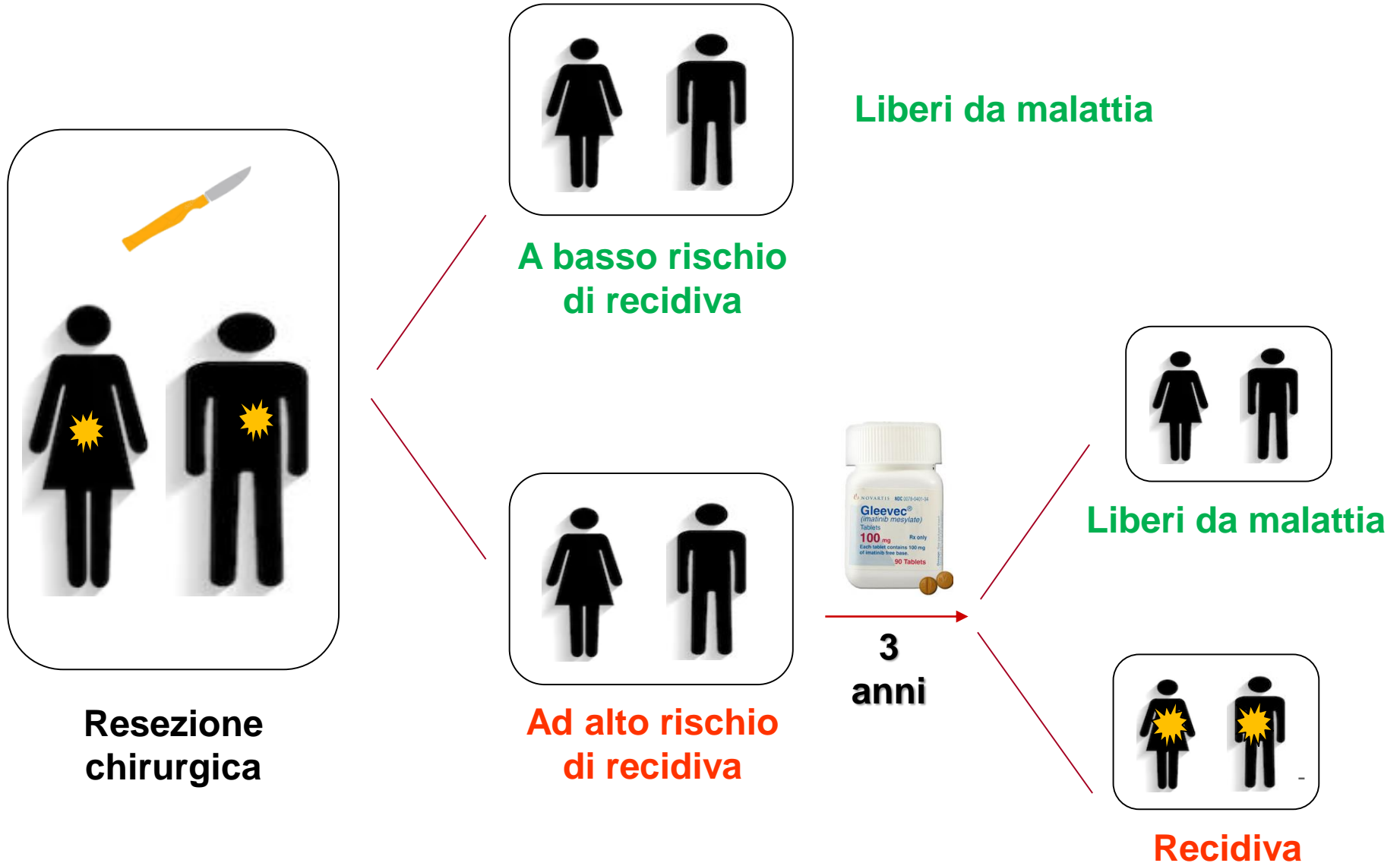


IMATINIB





Approccio terapeutico standard

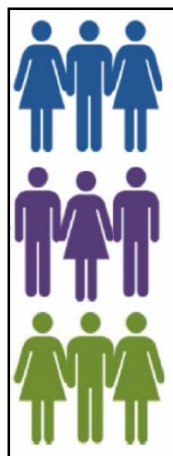
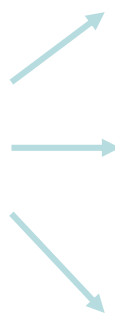
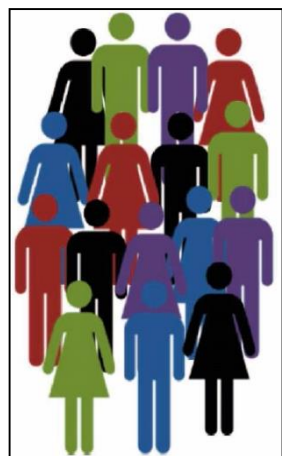
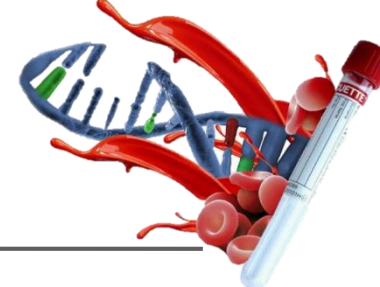




**I microRNA circolanti
possono aiutarci a
identificare i pazienti
che recidiveranno?**

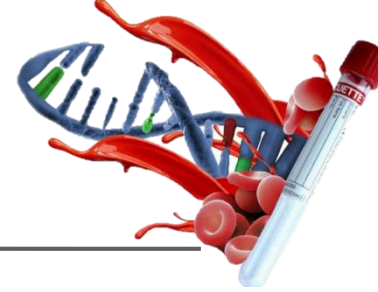


microRNA circolanti nei GIST



Rischio		Mutazione	Imatinib	
Basso rischio	GIST_01	KIT esone 11	x	
	GIST_02	KIT esone 11	x	
	GIST_03	KIT esone 11	x	
Alto rischio	GIST_04	KIT esone 11	✓	Liberi da malattia
	GIST_05	KIT esone 11	✓	
	GIST_06	KIT esone 11	✓	
Alto rischio	GIST_07	KIT esone 11	✓	Recidiva tumorale
	GIST_08	KIT esone 11	✓	
	GIST_09	KIT esone 11	✓	

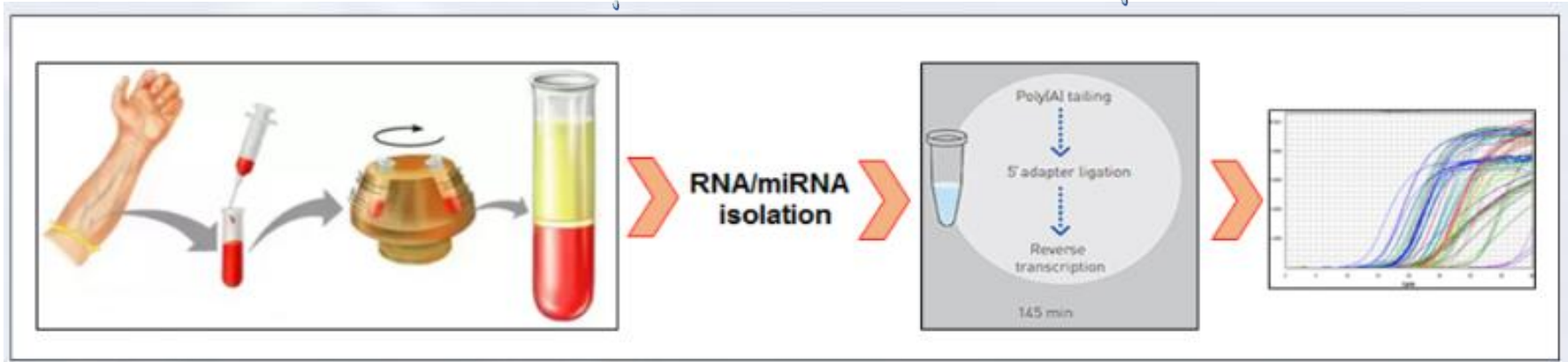
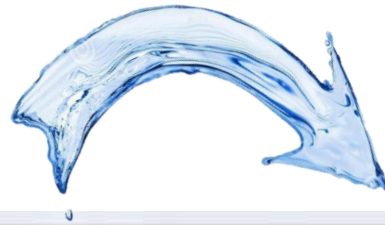
microRNA circolanti nei GIST

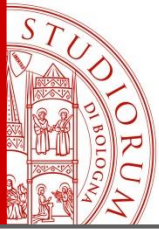


Estrazione RNA
da plasma

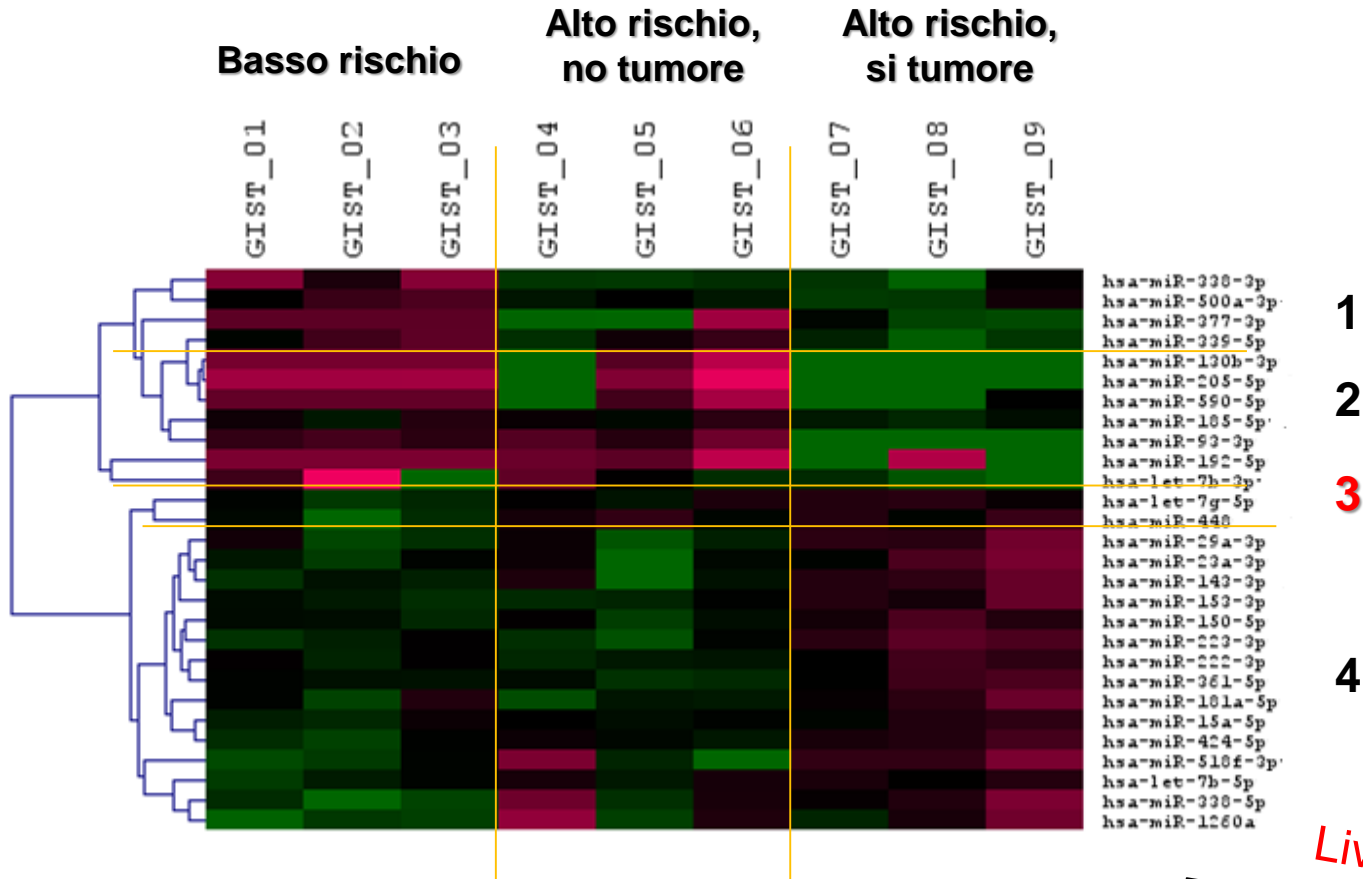
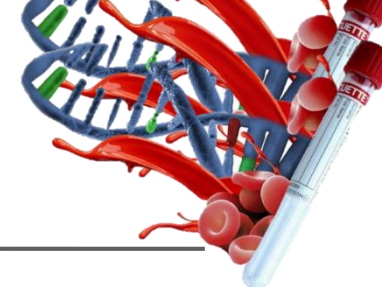
Analisi di 754
microRNA

Prelievo di sangue
processato entro 2 h



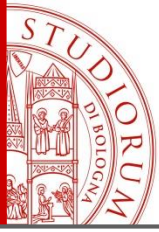


microRNA circolanti nei GIST

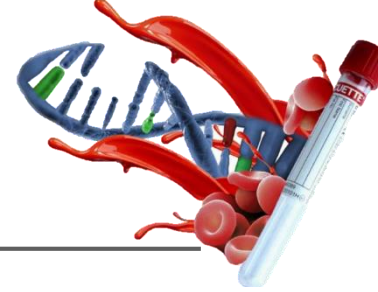


Livelli espressione





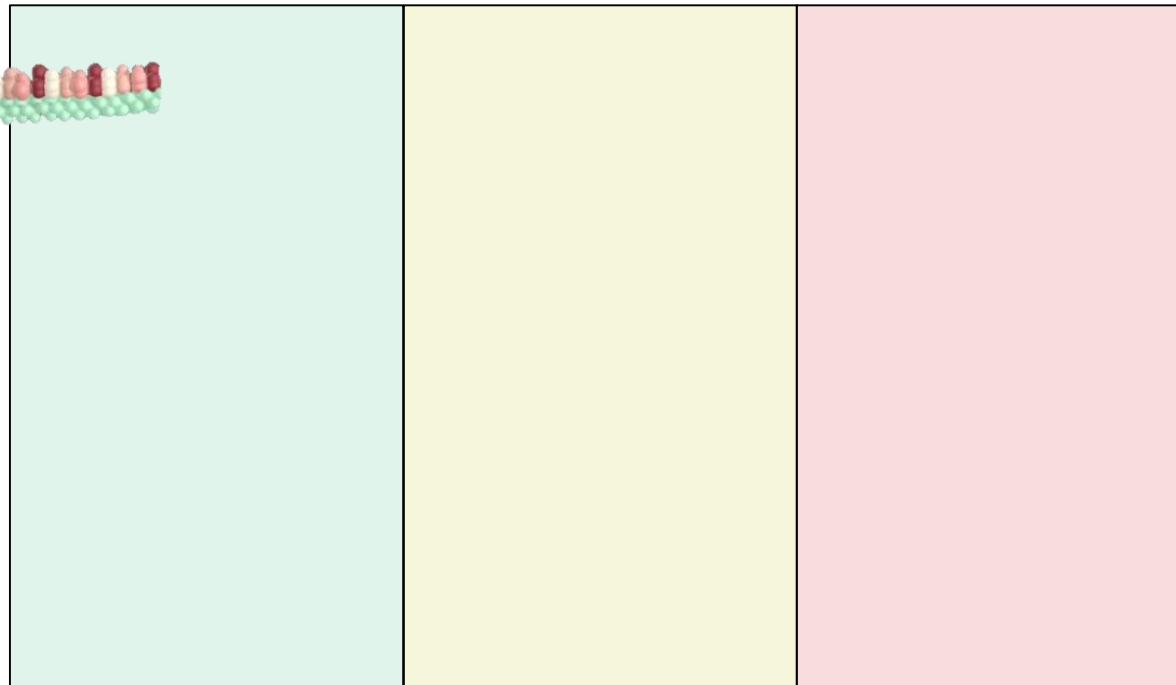
microRNA circolanti nei GIST



GIST Basso rischio	GIST Alto rischio, no tumore	GIST Alto rischio, + tumore
-----------------------	------------------------------------	-----------------------------------

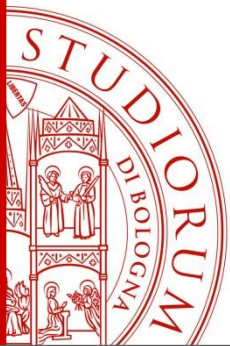


Let-7g-5p
miR-448



Livelli espressione

Ipotesi: miR-448 e let-7g-5p possono essere usati per monitorare l'andamento della malattia?



grazie



Laboratorio di Farmacogenetica e Farmacogenomica

Prof.ssa Patrizia Hrelia
Prof.ssa Sabrina Angelini
Dott.ssa Federica Zanotti

For Women
in Science

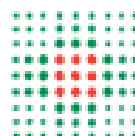


FONDATION
L'ORÉAL

Gist Study Group



ALMA MATER STUDIORUM
UNIVERSITÀ DI BOLOGNA



SERVIZIO SANITARIO REGIONALE
EMILIA-ROMAGNA

Azienda Ospedaliero - Universitaria di Bologna

Gloria.ravegnini2@unibo.it